



SAFETY MADE SIMPLE ONLINE TRAINING

SAFETY SCOOP

AUGUST 2022

IN THIS ISSUE:

- [Featured Course](#)
- [Announcements](#)
- [Is It Safe?](#)
- [Safety Sam's Insider Tip](#)
- [Take 5 Safety Message](#)
- [New and Updated Courses](#)
- [Share The News](#)
- [Keep In Touch](#)

SAFETY SAM'S INSIDER TIP...

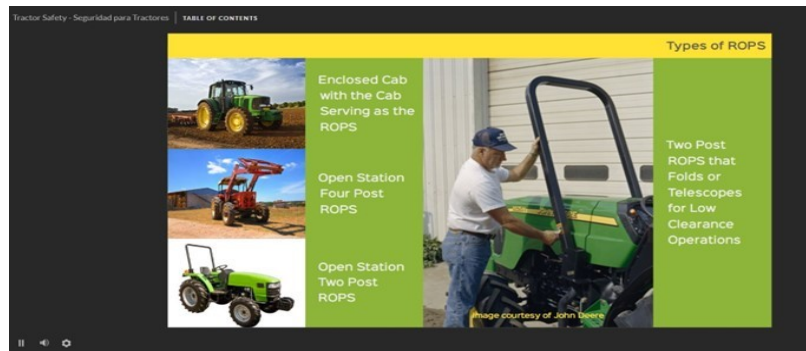


Already have an existing Learning Management System (LMS)? No problem! **Safety Made Simple** courses are compatible with any SCORM compliant LMS. A number of our partners offer our courses within their own LMS with our "**Content Only**." option. This option is cost effective, seamless, and can be implemented in a matter of days. **Contact us** to learn more.

TAKE 5 SAFETY MESSAGE

Featured Course

Tractor Safety



Workers can be killed or seriously injured falling from tractors, being run over by tractors, or being crushed when the tractor rolls sideways or backwards. Upon completion of this new course, learners will recognize why pre-use inspections are important and what they entail, identify rollover and runover hazards and how to prevent them, and apply safe practices during tractor operation.

Safety Made Simple offers courses on a wide variety of mobile equipment including mobile elevated work platforms, forklifts, front-end loaders, skid-steer loaders, and tractors. [Click here](#) to view our searchable online course catalog.

Announcements:

Updated Look for Safety Made Simple Courses

We are introducing a new modern player for Safety Made Simple courses! The modern player gives desktop and mobile learners a fresh, unified experience that is consistent across all devices. Watch for the new modern player on all new and refreshed courses being released beginning in August 2022.

Safety Made Simple Exhibits at Convey' 22

We were honored to sponsor and exhibit at this year's Convey' 22 in Omaha, Nebraska. Our team appreciated the opportunity to interact with current clients including Farmers Cooperative, CHS, Attebury Grain, AgState, Kokomo Grain, Michigan Agricultural Commodities, New Vision Coop, North Dakota Grain Dealers Association, Scoular, The Andersons, Ursa Farmers Cooperative, CCS Group, Soles Enterprises, and West Plains.

This Month's Take 5 Safety Message: "Power Line Safety"

Exposure to overhead and buried power lines can result in severe injury and death. This "**Take-5**" covers the importance of identifying buried and overhead lines, minimum clearance distances, and proper response to downed power lines.

This and other "Take-5's" can be accessed by your **Safety Made Simple** administrator at any time in the "Take-5" resources section of your company's training portal. Click [here](#) to check out our "Take-5" library.

NEW AND UPDATED COURSES

We continue to update existing courses and release new courses. Please check with your **Safety Made Simple** administrator for the courses available in your portal or click [here](#) to view our online course catalog.

SHARE THE NEWS...

Safety Scoop Newsletter -

Do you know someone who would benefit from receiving these notices? We'd be happy to add them to our Safety Scoop mailing list! Simply contact Catrina and let us know the names and e-mail addresses you'd like us to add -- or use the signup link located at the bottom of our website, www.safetymadesimple.com.

SMS Online Training -

If you know someone who isn't using **Safety Made Simple** but might be interested, let us know. Please also tell us if you know someone who would like to schedule a free demo.

Give us a call toll-free at 1-844-8SAFETY today!

KEEP IN TOUCH...



Safety Made Simple Collaborates with GEAPS to Offer Safety Webinars

Safety Made Simple is collaborating with the Grain Elevator and Processing Society (GEAPS) to provide high impact safety webinars over the next 12 months. These 30-minute webinars will focus on key safety and compliance challenges in the grain and feed industry. According to **Safety Made Simple's** Joe Mlynek, "We are excited to collaborate with GEAPS. We share a commitment to the hard-working people in the Ag industry. These fast-moving webinars will focus on critical information GEAPS members need to operate safely and stay compliant." More to come.....

Check out This Month's Safety Simplified Blog "Leading by Example"

Throughout our lives we have all heard of the importance of leading by example. Whether it is the example set for children, colleagues, or subordinates, leading by example is an effective means to influence behavior. An organizations culture reflects its beliefs, values, and attitudes. Establishing an effective safety culture requires employees, regardless of title or position, to lead by example. [Click here](#) to read this month's Safety Simplified blog - "Leading by Example."

Is It Safe?

FOR SALES INQUIRIES:
1-844-8SAFETY
info@safetymadesimple.com

Sam Germer:
515-706-4545

Joe Mlynek:
216-503-0101

Chuck Pirie:
913-764-6436

FOR CUSTOMER SUPPORT:
1-844-8SAFETY ext.9
support@safetymadesimple.com



Is it Safe? No Way!

This mobile elevated work platform (MEWP) was operating dangerously close to a drop-off. It is important to avoid operating equipment on grades and adjacent to slopes or ramps exceeding manufacturer ratings. This places the equipment in an unstable position.

Safety Made Simple offers courses on a wide variety of mobile equipment including aerial lifts, forklifts, front-end loaders, skid-steer loaders, and tractors. [Click here](#) to view our searchable course catalog.

If you you have a photo of a workplace situation that you would like to share, send it to us! We may use it in the Safety Scoop for others to learn from!

Contact [Joe](#), [Chuck](#), or [Catrina](#) at 1-844-8SAFETY to submit your photo.

PHONE: 1-844-8SAFETY | SAFETYMADESIMPLE.COM | [SEND US AN EMAIL](#)

[LIKE US ON FACEBOOK](#) | [FOLLOW US ON LINKEDIN](#)

**"Do nothing out of selfish ambition or vain conceit. Rather, in humility value others above yourselves."
Philippians 2:3**

Copyright © 2022 Safety Made Simple, LLC, All rights reserved.

[unsubscribe from this list](#) | [update subscription preferences](#)