



SAFETY MADE SIMPLE ONLINE TRAINING

SAFETY SCOOP

SEPTEMBER 2021

IN THIS ISSUE:

- [Featured Course](#)
- [Announcements](#)
- [Is It Safe?](#)
- [Safety Sam's Insider Tip](#)
- [New Courses Added](#)
- [Share The News](#)
- [Keep In Touch](#)

SAFETY SAM'S INSIDER TIP...



Safety Made Simple courses incorporate animations, characters, thought questions, drag-and-drop activities, and remediation to increase learner engagement and retention.

- **Animations** grab the attention of learners and keep them engaged since they don't know what is going to happen next.
- **Characters** are used in our case studies and interactive exercises to reinforce concepts by asking questions that learners may have but may not be comfortable asking their supervisor.
- **Thought questions** challenge learners to think about the why's and how's behind the information presented.
- **Drag-and drop activities** challenge learners to apply their knowledge by grouping information into the appropriate category or organizing it into the correct order.
- **Remediation** challenges learners to answer questions or solve drag-and-drop exercises. Correct answers are further elaborated, and the correct information is provided.

Integrating these elements into our courses is part of our simple, efficient, and effective approach to sending people home safely.

NEW COURSES ADDED

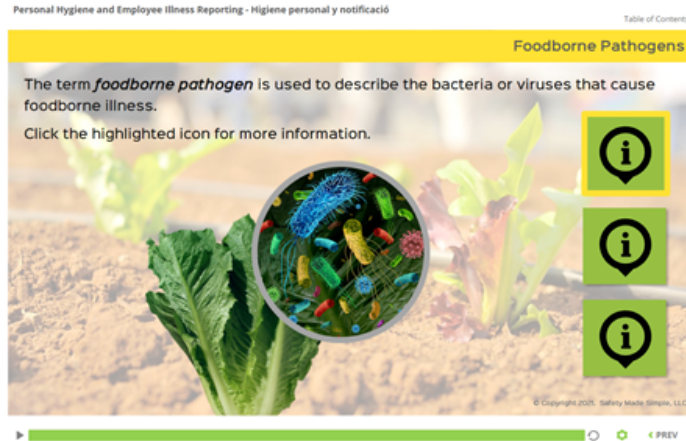
We continue to release new courses each month. Check with your *Safety Made Simple* administrator for the complete list of courses available in your portal.

SHARE THE NEWS...

Safety Scoop Newsletter - Do you know someone who would benefit from receiving these notices? We'd be happy to add them to our Safety Scoop mailing list! Simply contact [Catrina](#) and let us know the names and e-mail addresses you'd like us to add -- or use the signup link located at the bottom of our website, www.safetymadesimple.com.

Featured Course

Personal Hygiene and Employee Illness Reporting



Upon completion of this course learners will be able to recognize the common symptoms of foodborne illness, identify when to report illness to management, and prevent foodborne illness by practicing good personal hygiene habits at home and in the workplace.

Announcements:

Safety Made Simple Exhibits at GEAPS Exchange in Columbus, Ohio

A special thanks to those who visited Joe Mlynek at this year's GEAPS Exchange in Columbus, Ohio. Joe would also like to thank those who attended his educational sessions on employee onboarding and confined space/bin entry.



Safety Made Simple Partners with Several New Companies

Please join us in welcoming several new partners. Together we will send people home safely!



NGFA Resources Now Available!

NGFA Safety Tips Sheets and online courses (Lockout Tagout and Slips, Trips, and Falls) are now available within your *Safety Made Simple* portal. Please share these valuable resources with your employees.

"Take-5" Safety Message

This "Take-5" safety message "Engulfment - Bridging Grain" covers the hazards associated with bridging grain as

SMS Online Training -

If you know someone who isn't using **Safety Made Simple** but might be interested, let us know. Please also tell us if you know someone who would like to schedule a free demo.

Give us a call toll-free at 1-844-8SAFETY today!

KEEP IN TOUCH...

FOR SALES INQUIRIES:

1-844-8SAFETY
info@safetymadesimple.com

Sam Germer:
515-706-4545

Joe Mlynek:
216-503-0101

Chuck Pirie:
913-764-6436

FOR CUSTOMER SUPPORT:

1-844-8SAFETY ext.9
support@safetymadesimple.com

well as safe strategies for entry into grain bins, silos, and tanks. This [Take-5](#) and other "Take-5's" can be accessed by your **Safety Made Simple** administrator at any time in the "Take-5" Resources section of your portal.

Is It Safe?



Yes, this **Safety Made Simple** partner recently installed a catwalk with guardrail and self-closing safety gates to access their loadout spouts. Prior to installation, employees used extension ladders to access platforms located at each spout.

If you have a photo of a workplace situation that you would like to share, send it to us! We may use it in the Safety Scoop for others to learn from!

Contact [Joe](#), [Chuck](#), or [Catrina](#) at 1-844-8SAFETY to submit your photo.

PHONE: 1-844-8SAFETY | SAFETYMADESIMPLE.COM | [SEND US AN EMAIL](#)

[LIKE US ON FACEBOOK](#) | [FOLLOW US ON LINKEDIN](#)



Jesus said, "Whoever wants to become great among you must be your servant, and whoever wants to be first must be your slave."
Matthew 20:26

Copyright © 2021 Safety Made Simple, LLC, All rights reserved.

[unsubscribe from this list](#) | [update subscription preferences](#)